



**Government of India
Ministry of Earth Sciences
India Meteorological Department**



Press Release

Date: 05th September, 2025

Time of Issue: 1330 hours IST

Subject: Well Marked low pressure area over northwest Madhya Pradesh & adjoining east Rajasthan, likely to concentrate into a depression over South Rajasthan and adjoining North Gujarat by 07th September morning. Under its influence, Heavy to very heavy rainfall likely over Gujarat state and Rajasthan till 07th September with possibility of Extremely heavy falls at isolated places over Gujarat Region during 05th-07th and Saurashtra & Kutch on 06th & 07th with exceptionally heavy rainfall (≥ 30 cm) over Gujarat region on 06th; Extremely heavy falls also likely over East Rajasthan on 05th & 06th and southwest Rajasthan on 07th September, 2025.

Realised weather during past 24 hours till 0830 hours IST of today, the 04th September, 2025:

- ❖ **Heavy to very heavy rainfall with Extremely heavy rainfall (≥ 21 cm)** has been recorded at isolated places over Gujarat Region.
- ❖ **Very heavy rainfall (12-20 cm)** has been recorded at isolated places over Madhya Pradesh, Chhattisgarh, Assam & Meghalaya.
- ❖ **Heavy rainfall (7-11 cm)** has been recorded at isolated places over Sub-Himalayan West Bengal & Sikkim, Haryana, Kerala & Mahe, Nagaland, Manipur, Mizoram & Tripura, Odisha, Konkan & Goa, Madhya Maharashtra.

For more details of realised weather, kindly refer [Annexure I](#).

i. Weather Systems, Forecast and Warnings (refer to [Annexure II & III](#)):

- ❖ The Monsoon trough at mean sea level runs south of its normal position.
- ❖ The low pressure area over central parts of West Madhya Pradesh moved west-northwestwards and lay as a well marked low pressure area over Northwest Madhya Pradesh and adjoining East Rajasthan at 0830 hrs IST of today, the 5th September, 2025. It is likely to continue to move further west-northwestwards and concentrate into a depression over South Rajasthan and adjoining North Gujarat by 7th September morning.
- ❖ An **upper air cyclonic circulation** lies over northeast Arabian Sea & adjoining Gujarat coast in middle tropospheric levels.
- ❖ A **trough** runs from northeast Arabian Sea to northwest Bay of Bengal in lower & middle tropospheric levels

Under the influence of these systems, the following weather is likely:

West and Northwest India:

- ❖ **Extremely heavy falls at isolated places over Gujarat Region during 05th-07th and Saurashtra & Kutch on 06th & 07th with exceptionally heavy rainfall (≥ 30 cm) over Gujarat region on 06th; Extremely heavy falls also likely over East Rajasthan on 05th & 06th and southwest Rajasthan on 07th September, 2025.**
- ❖ **Isolated heavy rainfall** is very likely over West Rajasthan on 05th & 08th; Uttarakhand on 06th & 07th; Himachal Pradesh on 08th & 09th; Haryana Chandigarh & Delhi during 08th-10th; Punjab on 10th; East Uttar Pradesh on 10th & 11th; East Rajasthan on 08th September; Marathwada on 05th; Konkan & Goa, Madhya Maharashtra on 07th; Gujarat State on 08th September with **very heavy rainfall over Konkan & Goa and Madhya Maharashtra on 05th & 06th; Saurashtra & Kutch on 05th; West Rajasthan on 06th; East Rajasthan on 07th September.**
- ❖ Light to moderate rainfall accompanied with thunderstorm & lightning at a most/many places very likely over the region during next 7 days.

East & Central India:

- ❖ Isolated **heavy rainfall** likely over West Madhya Pradesh on 06th; East Madhya Pradesh on 05th; Odisha on 05th; Sub-Himalayan West Bengal & Sikkim during next 7 days; Bihar on during 08th-10th; Andaman & Nicobar Islands on 09th & 10th; Chhattisgarh on 10th & 11th September with isolated **very heavy rainfall over West Madhya Pradesh on 05th September**.
- ❖ Light to moderate rainfall at most/many places accompanied with thunderstorm & lightning likely over the region during next 7 days.

Northeast India:

- ❖ Isolated **heavy rainfall** likely over Assam & Meghalaya during 05th-07th and on 10th & 11th; Nagaland, Manipur, Mizoram & Tripura during 05th-07th and Arunachal Pradesh during 06th-09th September.
- ❖ Light/moderate rainfall at many places accompanied with thunderstorm & lightning likely during next 7 days.

South Peninsular India:

- ❖ Isolated **heavy rainfall** likely over Tamil Nadu on 05th & 06th and during 08th-10th; Kerala & Mahe on 09th & 10th; September.
- ❖ Strong surface winds (speed reaching 30-40 kmph) very likely over Coastal Andhra Pradesh & Yanam, Rayalaseema during next 5 days.
- ❖ Light to moderate rainfall accompanied with thunderstorm & lightning at a few places likely over the region during next 5 days.

Fishermen warning:

Fishermen are advised not to venture into the following from 05 th to 10 th September 2025 to the following Areas:

Arabian Sea (AS):

Along and off the Somalia coasts; some parts of central & southwest and many parts of north Arabian Sea during 07 th to 10 th September, some parts of southwest & adjoining westcentral Arabian Sea during 05 th to 07th September and Oman coasts on 07 th & 10th September, many parts of northeast Arabian Sea during 05th to 07 th September. along and off Gujarat coasts during 05th to 10th September, along & off north Maharashtra coasts during 05th to 09 th September.

Bay of Bengal (BoB):

Most parts of southwest Bay of Bengal during 05th September, some parts of south Bay of Bengal on 06 th September, few parts of southwest Bay of Bengal on 07 th to 09 th September. Over Gulf of Mannar & few parts of Comorin area during 05th to 09 th September. Off Tamil Nadu coast on 05 th September.

ii. Weather conditions and forecast over Delhi/NCR during 05th September to 08th September 2025 (Annexure IV)

For more details, kindly refer National Weather Bulletin:

https://mausam.imd.gov.in/responsive/all_india_forecast_bulletin.php

For District wise warnings refer: <https://mausam.imd.gov.in/responsive/districtWiseWarningGIS.php>

For Fishermen warning refer <https://rsmcnewdelhi.imd.gov.in/fishermen-warning.php>

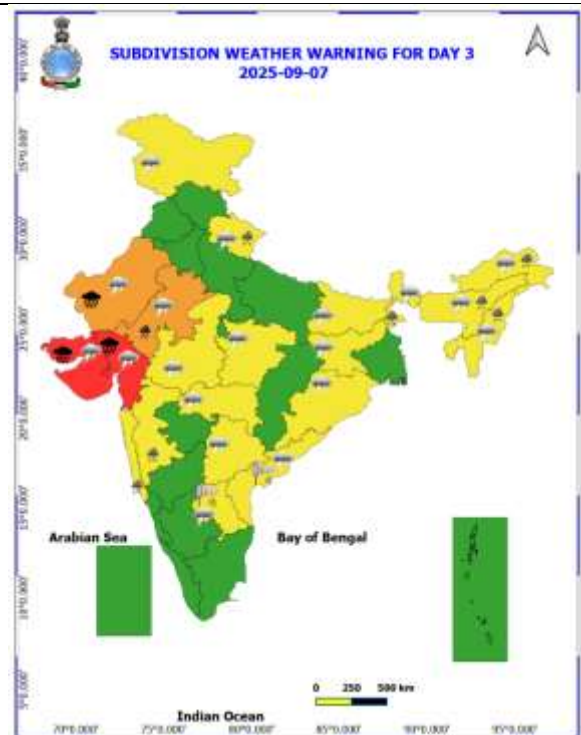
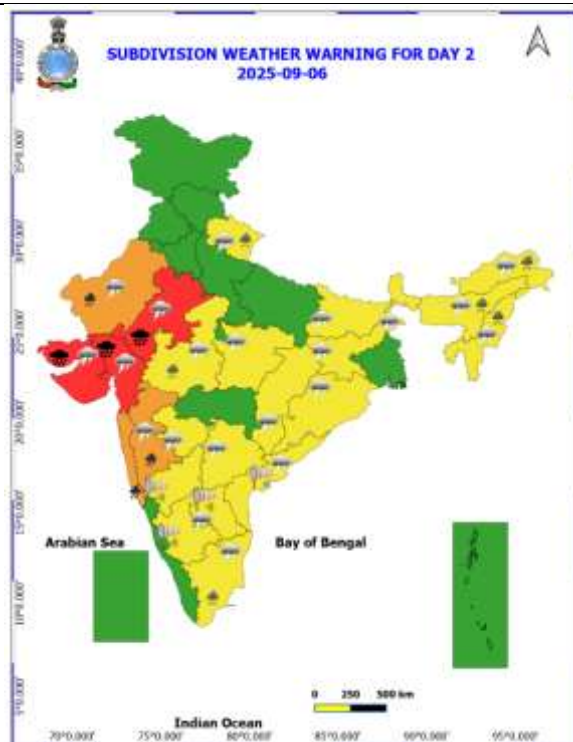
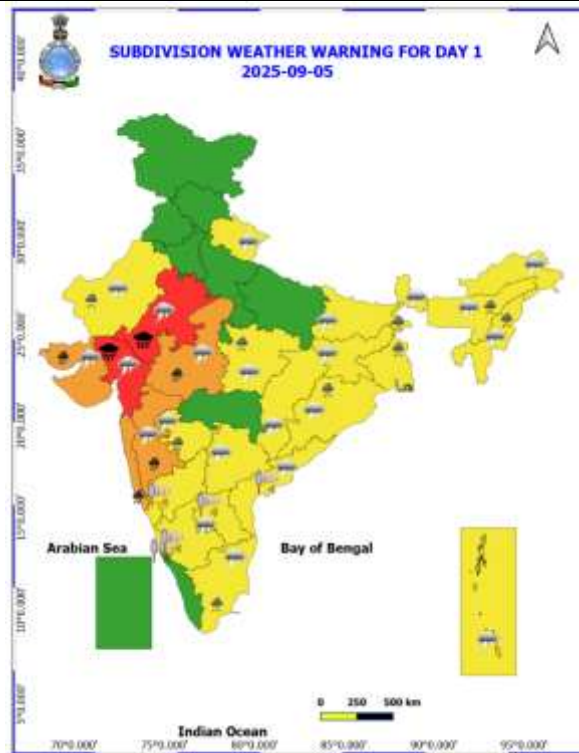
Rainfall recorded (in cm) during past 24 hours till 0830 hours IST of today, the 05th September:

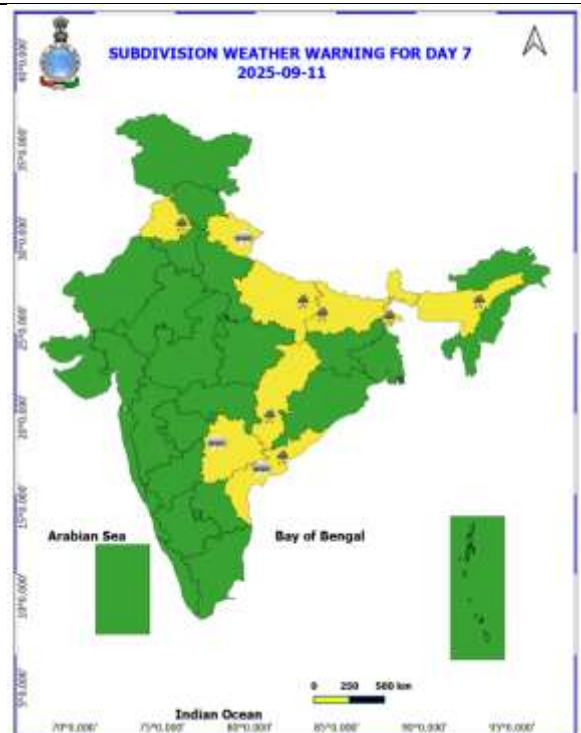
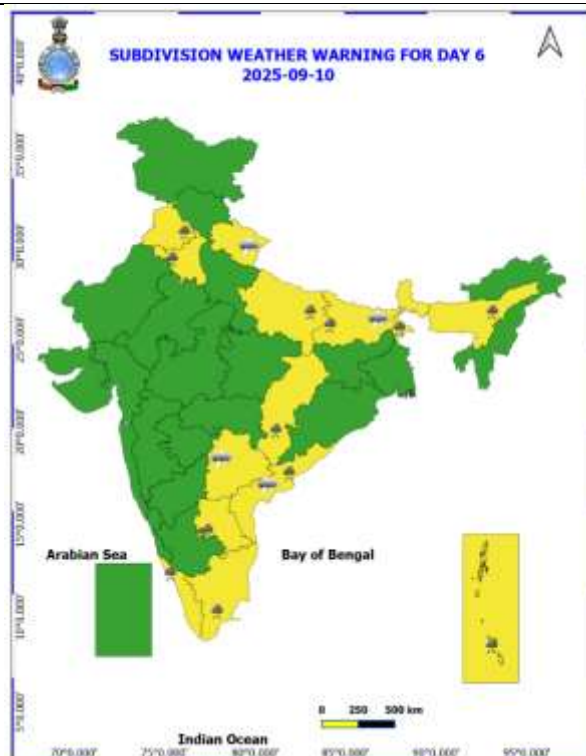
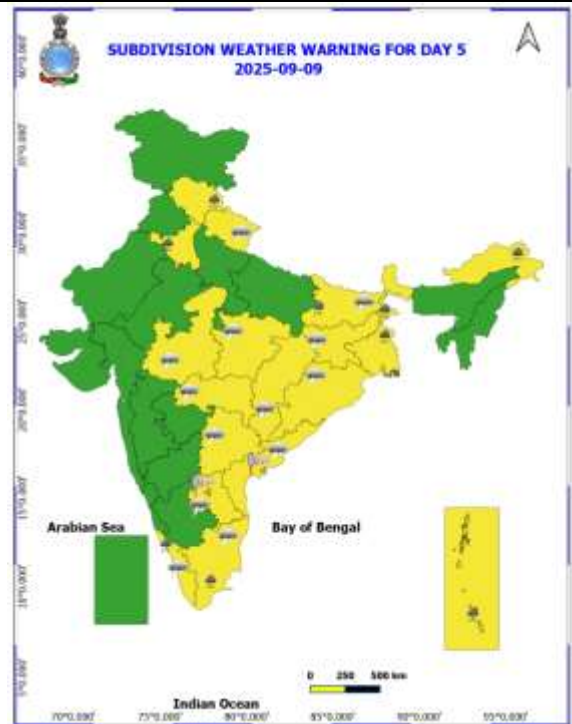
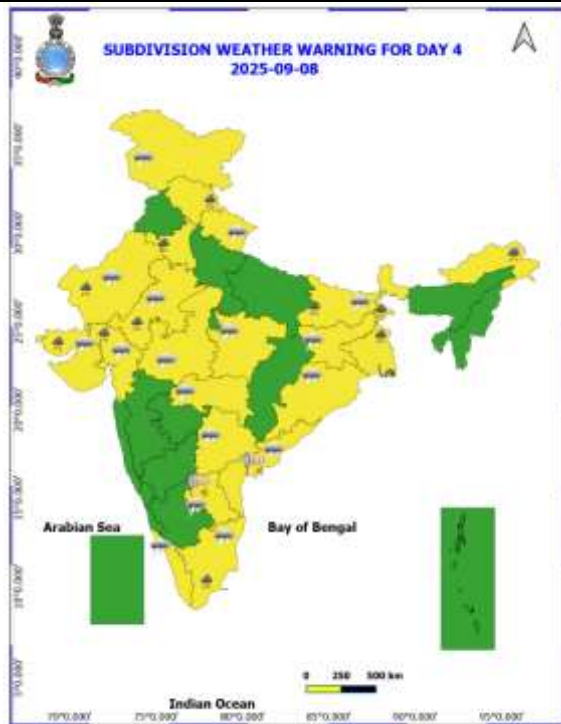
- ❖ **Gujarat Region:** Umerpada (dist Surat) 21, Bodeli (dist Chhota Udepur) 20, Jambughoda (dist Panchmahal) 19, Ukai (dist Surat) 16, Jetpur Pavi (dist Chhota Udepur) 15, Tilakwada (dist Narmada) 14, Songadh (dist Tapi) 14, Netrang (dist Bharuch) 14, Sankheda (dist Chhota Udepur) 13, Ankleshwer (dist Bharuch) 12, Vyara_aws (dist Tapi) 12, Vyara (dist Tapi) 12, Dabhoi (dist Vadodara) 11, Garudeshwar (dist Narmada) 11, Bharuch (dist Bharuch) 11, Quant (dist Chhota Udepur) 10, Khambhat (dist Anand) 10, Naswadi (dist Chhota Udepur) 10, Hansot (dist Bharuch) 10, Palsana (dist Surat) 10, Olpad (dist Surat) 9, Surat City (dist Surat) (STATE GOVT DATA)9, Mangrol (dist Surat) 9, Bardoli (dist Surat) 9, Dediapada (dist Narmada) 9, Sagbara (dist Narmada) 9, Dholera (dist Ahmedabad) 9, Jhagadia (dist Bharuch) 9, Singvad (dist Dahod) 9, Karjan (dist Vadodara) 9, Kamrej (dist Surat) 9, Kukarmunda (dist Tapi) 9, Valia (dist Bharuch) 8, Narmada_kvks Aws (dist Narmada) 8, Waghodia (dist Vadodara) 8, Nandod (dist Narmada) 8, Rajpipala (dist Narmada) 8, Daman (dist Daman) 8, Nadiad (dist Kheda) 8, Sanjeli (dist Dahod) 7, Mandvi (dist Surat) 7, Halol (dist Panchmahal) 7, Vapi (dist Valsad) 7, Khanvel (dist Dadara & Nagar Haveli) 7, Subir (dist Dangs) 7,
- ❖ **East Madhya Pradesh:** Palera (dist Tikamgarh) 19, Bilhari (dist Katni) 9, Nowgong (dist Chhatarpur) 8,
- ❖ **Assam & Meghalaya:** Lakhimpur Arg (dist Lakhimpur) 13, Lakhimpur Arg (dist Cachar) 12, N.lakhimpur/lilabari (dist Lakhimpur) 12, Chauldhowaghat (dist Lakhimpur) 10, Chouldhuwaghat Arg (dist Lakhimpur) 10, Jorhat (dist Jorhat) 10, Jorhat_aws (dist Jorhat) 9, Shella (dist East Khasi Hills) 7,
- ❖ **Chhattisgarh:** Bhaisma (dist Korba) 12, Pondi Bachra (dist Koriya) 9, Adbhar (dist Sakti) 7,
- ❖ **West Madhya Pradesh:** Piploda (dist Ratlam) 12, Raoti (dist Ratlam) 11, Hatod (dist Indore) 10, Gyaspur (dist Vidisha) 9, Gautampura (dist Indore) 9, Depalpur (dist Indore) 8, Pithampur (dist Dhar) 8, Bhavgarh (dist Mandsaur) 7, Meghnagar (dist Jhabua) 7, Badnagar (dist Ujjain) 7,
- ❖ **Madhya Maharashtra:** Akkalkuwa (dist Nandurbar) 9, Igatpuri (dist Nashik) 7,
- ❖ **Nagaland, Manipur, Mizoram & Tripura:** Kanchanpur (dist North Tripura) 9, Mangkolemba (dist Mokokchung) 8,
- ❖ **Konkan & Goa:** Jawhar (dist Palghar) 8, Talasari (dist Palghar) 8, Palghar_agri (dist Palghar) 7,
- ❖ **Sub-Himalayan West Bengal & Sikkim:** Buxaduar (dist Alipurduar) 8,
- ❖ **Kerala & Mahe:** Pattambi (dist Palakkad) 7,
- ❖ **Haryana:** Badli Rev (dist Jhajjar) 7,

ANNEXURE II

Table-1								
7 Days Rainfall Forecast								
S.No.	Subdivision	5- Sep	6- Sep	7- Sep	8- Sep	9- Sep	10- Sep	11- Sep
		Day 1	Day 2	Day 3	Day 4	Day 5	Day 6	Day 7
1	ANDAMAN & NICOBAR ISLANDS	WS	WS	WS	WS	WS	WS	WS
2	ARUNACHAL PRADESH	SCT	SCT	SCT	SCT	SCT	SCT	SCT
3	ASSAM & MEHGHALAYA	SCT	FWS	FWS	SCT	SCT	SCT	SCT
4	NAGALAND, MANIPUR, MIZORAM AND TRIPURA	FWS	FWS	FWS	SCT	SCT	SCT	SCT
5	SUB HIMALAYAN WEST BENGAL & SIKKIM	SCT	SCT	FWS	FWS	FWS	FWS	FWS
6	GANGETIC WEST BENGAL	SCT	SCT	SCT	FWS	FWS	SCT	SCT
7	ODISHA	FWS	FWS	SCT	SCT	FWS	FWS	FWS
8	JHARKHAND	FWS	SCT	SCT	FWS	FWS	FWS	FWS
9	BIHAR	ISOL	SCT	SCT	FWS	FWS	FWS	SCT
10	EAST UTTAR PRADESH	ISOL	ISOL	ISOL	SCT	SCT	SCT	SCT
11	WEST UTTAR PRADESH	SCT	ISOL	ISOL	ISOL	ISOL	ISOL	ISOL
12	UTTARAKHAND	FWS	FWS	FWS	FWS	FWS	FWS	SCT
13	HARYANA, CHANDIGARH & DELHI	SCT	SCT	SCT	SCT	SCT	SCT	ISOL
14	PUNJAB	ISOL	ISOL	SCT	SCT	SCT	SCT	ISOL
15	HIMACHAL PRADESH	SCT	SCT	SCT	FWS	FWS	SCT	SCT
16	JAMMU AND KASHMIR AND LADAKH	ISOL	ISOL	FWS	FWS	SCT	ISOL	ISOL
17	WEST RAJASTHAN	SCT	FWS	FWS	SCT	ISOL	ISOL	ISOL
18	EAST RAJASTHAN	WS	WS	FWS	SCT	ISOL	ISOL	SCT
19	WEST MADHYA PRADESH	WS	WS	FWS	SCT	SCT	SCT	SCT
20	EAST MADHYA PRADESH	FWS	FWS	FWS	SCT	SCT	SCT	FWS
21	GUJRAT REGION	WS	WS	WS	FWS	FWS	SCT	SCT
22	SAURASHTRA & KUTCH	WS	WS	WS	WS	FWS	SCT	SCT
23	KONKAN & GOA	WS	WS	WS	WS	WS	WS	WS
24	MADHYA MAHARASHTRA	SCT	SCT	SCT	SCT	ISOL	ISOL	ISOL
25	MARATHWADA	SCT	SCT	ISOL	ISOL	ISOL	ISOL	ISOL
26	VIDARBHA	FWS	SCT	SCT	SCT	FWS	FWS	FWS
27	CHHATTISGARH	FWS	SCT	SCT	FWS	FWS	FWS	FWS
28	COASTAL ANDHRA PRADESH	ISOL	ISOL	ISOL	ISOL	SCT	FWS	FWS
29	TELANGANA	ISOL	ISOL	ISOL	ISOL	ISOL	SCT	SCT
30	RAYALASEEMA	ISOL	ISOL	ISOL	ISOL	ISOL	SCT	FWS
31	TAMILNADU & PUDUCHERRY	ISOL	ISOL	ISOL	SCT	SCT	SCT	ISOL
32	COSTAL KARNATAKA	WS	WS	FWS	FWS	SCT	SCT	SCT
33	NORTH INTERIOR KARNATAKA	ISOL	ISOL	ISOL	ISOL	ISOL	SCT	SCT
34	SOUTH INTERIOR KARNATAKA	SCT	SCT	SCT	SCT	SCT	FWS	FWS
35	KERALA AND MAHE	FWS	SCT	SCT	FWS	WS	WS	FWS
36	LAKSHADWEEP	FWS	SCT	SCT	SCT	SCT	SCT	SCT

- As the lead period increases forecast accuracy decrease.





- Action may be taken based on ORANGE AND REDCOLOUR warnings.
- Vulnerable regions likely urban and hilly areas action may be initiated for heavy rainfall warning.
- As the lead period increases forecast accuracy decreases.

Detailed districtwise Multi Hazard weather warning for next five days available at
<https://mausam.imd.gov.in/responsive/districtWiseWarningGIS.php>

Weather forecast over Delhi/NCR during 05th to 08th September 2025

Past Weather:

There has been rise in the minimum temperature up to 1 - 2°C and rise in maximum temperature up to 1 - 2°C over Delhi/NCR during the past 24 hours. The maximum and minimum temperatures over Delhi were around 32 to 34°C and 23 to 25°C respectively. The minimum temperature was below normal up to 1 – 2°C and maximum temperature was near normal. Generally cloudy sky conditions with predominant surface wind from the east/southeast direction with wind speeds up to 15 kmph prevailed during the past 24 hours. Very light to light rain/thundershowers at most places with moderate rain in isolated has been recorded in Delhi. Generally cloudy sky conditions with a wind speed of less than 18 kmph from the east direction prevailed over the region in the forenoon today.

Weather Forecast:

05.09.2025: Generally cloudy sky. One or two spells of very light to light rain/thundershowers like at many places with possibility of moderate rain at isolated places during afternoon/evening. The maximum temperatures over Delhi are likely to be in the range of 33 to 35°C. The maximum temperature will be near normal. The predominant surface wind will likely be from the east direction with a wind speed of up to 15-20 kmph during the afternoon hours. The wind speed will decrease becoming less than 15 kmph from the east direction during the evening and night.

06.09.2025: Generally cloudy sky. Possibility of one or two spells of very light to light rain/thundershowers like at many places. The maximum and minimum temperatures over Delhi are likely to be in the range of 33 to 35°C and 23 to 25°C respectively. The minimum temperature will be below normal up to 1 to 2°C and the maximum temperature will be near normal. The predominant surface wind will likely to be from the east direction with a wind speed of up to 10 - 15 kmph during morning hours. The wind speed will gradually increase becoming less than 20 kmph from the southeast direction in the afternoon. The wind speed will decrease becoming less than 15 kmph from the southeast direction during the evening and night.

07.09.2025: Generally cloudy sky. Possibility of one or two spells of very light to light rain/thundershowers. The maximum and minimum temperatures over Delhi are likely to be in the range of 33 to 35°C and 22 to 24°C respectively. The minimum temperature will be below normal up to 1 to 2°C and the maximum temperature will be near normal. The predominant surface wind will likely to be from the southeast direction with a wind speed of up to 10-15 kmph during morning hours. The wind speed will gradually decrease becoming less than 12 kmph from the southeast direction in the afternoon. The wind speed will decrease becoming less than 10 kmph from the south direction during the evening and night.

08.09.2025: Partly cloudy sky. The maximum and minimum temperatures over Delhi are likely to be in the range of 33 to 35°C and 22 to 24°C respectively. The minimum temperature will be below normal up to 1 to 3°C and the maximum temperature will be near normal. The predominant surface wind will likely be from the south direction with a wind speed of less than 15 kmph during the morning hours. The wind speed will gradually decrease becoming less than 12 kmph from the south direction in the afternoon. The wind speed will decrease becoming less than 10 kmph from the southwest direction during the evening and night.

Impact expected and Action Suggested due to light to moderate rainfall with thundershowers:

- Damage to standing crops, Minor to major damage to power and communication lines due to breaking of branches, Partial damage to vulnerable structures due to strong winds, Loose objects may fly.
- People are advised to keep a watch on the weather for worsening conditions and be ready to move to safer places accordingly, stay indoors, close windows & doors and avoid travel if possible, take safe shelters; do not take shelter under trees, do not lie on concrete floors and do not lean against concrete walls, unplug electrical/ electronic appliances, immediately get out of water bodies, keep away from all the objects that conduct electricity.

Impact & Action Suggested due to

- ❖ **Extremely heavy rainfall very likely at isolated places** over Gujarat Region during 05th-07th; Saurashtra & Kutch on 06th & 07th September with exceptionally heavy rainfall (≥ 30 cm) over Gujarat region 06th; East Rajasthan on 05th & 06th and southwest Rajasthan on 07th September.
- ❖ **Very heavy rainfall** over Konkan & Goa and Madhya Maharashtra on 05th & 06th; Saurashtra & Kutch on 05th; West Rajasthan on 06th; East Rajasthan on 07th; West Madhya Pradesh on 05th September.

Impact Expected

- Localized Flooding of roads, water logging in low lying areas and closure of underpasses mainly in urban areas of the above region.
- Occasional reduction in visibility due to heavy rainfall.
- Disruption of traffic in major cities due to water logging in roads leading to increased travel time.
- Minor damage to kutcha roads.
- Possibilities of damage to vulnerable structure.
- Localized Landslides/Mudslides/landslips/mudslips/landsinks/mudsinks.
- Damage to horticulture and standing crops in some areas due to inundation.
- It may lead to riverine flooding in some river catchments (for riverine flooding please visit Web page of CWC)

Action Suggested

- Check for traffic congestion on your route before leaving for your destination.
- Follow any traffic advisories that are issued in this regard.
- Avoid going to areas that face the water logging problems often.
- Avoid staying in vulnerable structure.

Agromet advisories for likely impact of Heavy / Heavy to Very Heavy / Extremely Heavy Rainfall

- In **Gujarat**, make arrangements to drain out excess rain water from fields of rice, sugarcane, okra, tuber crops and vegetables in **South Gujarat Heavy Rainfall Zone**; rice, cotton, pigeon pea and fruit orchards (banana and mango) in **South Gujarat Zone**; rice, pearl millet, pigeon pea, cotton, soybean, maize and castor in **Middle Gujarat Zone**; in castor, cotton, groundnut, pearl millet, sesame, maize and vegetables in **North Gujrat Zone**; cotton, green gram, black gram, pigeon pea, pearl millet and vegetables in **Bhal and Coastal Zone**; groundnut, cotton and soybean in **North Saurashtra Zone** and groundnut, cotton, soybean, black gram, green gram, sesame and pigeon pea in **South Saurashtra Zone**.
- In **Rajasthan**, make proper drainage arrangements in fields of cotton, maize, soybean and pulses in **Sub Humid Southern Plain and Aravali Hill Zone**; fields of soybean, cotton, maize and vegetables in **Southern Humid Plain Zone**; fields of soybean and pigeon pea in **Southeastern Humid Plain Zone** and vegetable nurseries and fields of standing crops such as pearl millet, black gram and sesame in **Flood Prone Eastern Plain Zone**; standing *kharif* crops (green gram and cluster bean) in **Barmer** and **Jalore** district.
- In **Madhya Pradesh**, provide adequate drainage in fields of soybean, maize, pulses and vegetables in **Malwa Plateau Zone** and maize, soybean, cotton, black gram and vegetables in **Jhabua Hills Zone**.
- In **Maharashtra**, drain out excess water from fields of rice, finger millet, turmeric, groundnut, vegetables and fruit orchards in **Konkan**; from rice and finger millet in *ghat* areas of **Nasik, Pune, Kolhapur** and **Satara districts**; and make arrangements to drain out excess water from

cotton, groundnut, maize, soybean, vegetables and orchards in Dhule, Nandurbar and Jalgaon districts of **Madhya Maharashtra**.

- In **Odisha**, make necessary arrangements to drain out excess rain water from fields of rice, maize, black gram and vegetables in **North Central Plateau Zone**.

Livestock / Fishery

- Keep the animals inside the shed during heavy rainfall and provide them balanced feed.
- Store feed and fodder in a safe place to prevent spoilage.
- Construct an outlet with proper netting around the ponds to drain out excess water, thereby preventing fish from escaping in case of overflow.

Agromet advisories for likely impact of Thunderstorm / Gusty Winds / Squally Winds (Based on the IBF and advisories issued by different AMFUs)

- Provide mechanical support to horticultural crops and staking or support to vegetables and young fruit plants / fruit-bearing plants to avoid lodging due to strong winds.

Flash flood guidance:

24 hours Outlook for the Flash Flood Risk (FFR) till 1130 IST of 06-09-2025 :

Moderate flash flood risk likely over few watersheds & neighbourhoods of following Met Sub-divisions during next 24 hours.

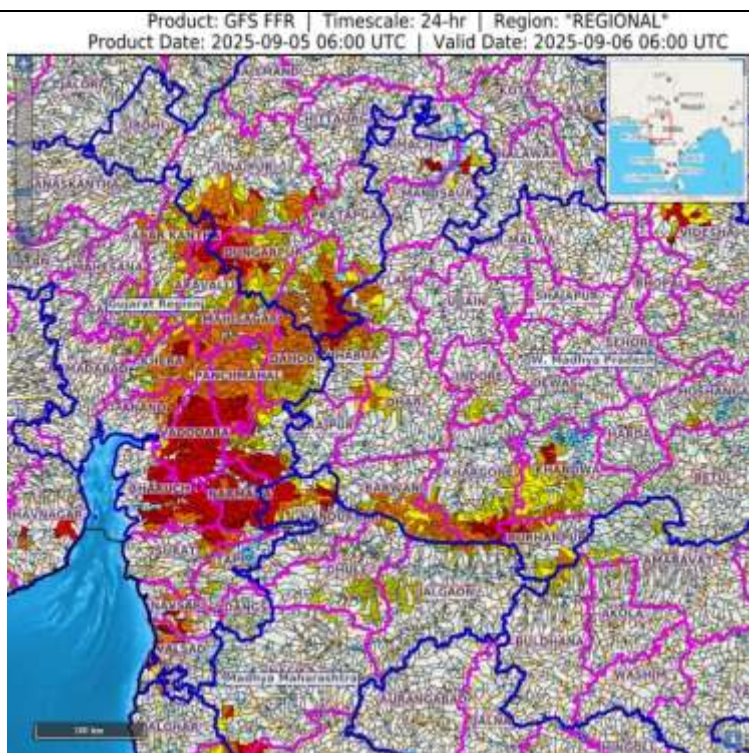
Gujarat Region – Ahmedabad, Anand, Aravalli, Gandhinagar, Khera, Valsad, Navsari, Dangs, Tapi, Surat, Narmada, Bharuch, Chhota Udaipur, Vadodara, Panchmahal, Dahod, Mahisagar and Sabar Kantha districts.

West Madhya Pradesh – Alirajpur, Bharwani, Burhanpur, Dhar, Jhabua, Khargone, Khandwa, and Ratlam districts.

East Rajasthan – Banswara, Dungarpur, Pratapnagar and Udaipur districts.

Madhya Maharashtra – Jalgaon, Dhule and Nandurbar districts

Surface runoff/ Inundation may occur at some fully saturated soils & low-lying areas over Area of Concern (AoC) as shown in map due to expected rainfall occurrence in next 24 hours.



Legends & abbreviations:

- ❖ **Heavy Rain:**64.5-115.5mm; **Very Heavy Rain:**115.6-204.4mm; **Extremely Heavy Rain:** >204.4mm.
- ❖ **Obsy:** Observatory; Automatic Weather Station; **ARG:** Automatic Rain Gauge; **dist:** District; **NH:** National Highway; **KVK:** Krishi Vigyan Kendra; **DVC:** Damodar Valley Corporation; **PTO:** Part Time Office, **Aero:** Aerodrome, **IAF:** Indian Air Force.
- ❖ **Region wise classification of meteorological Sub-Divisions:**
 - **Northwest India:** Western Himalayan Region (Jammu-Kashmir-Ladakh-Gilgit-Baltistan-Muzaffarabad, Himachal Pradesh and Uttarakhand); Punjab, Haryana-Chandigarh-Delhi; West Uttar Pradesh, East Uttar Pradesh, West Rajasthan and East Rajasthan.
 - **Central India:** West Madhya Pradesh, East Madhya Pradesh, Vidarbha and Chhattisgarh.
 - **East India:** Bihar, Jharkhand, Sub-Himalayan West Bengal & Sikkim; Gangetic West Bengal, Odisha and Andaman & Nicobar Islands.
 - **Northeast India:** Arunachal Pradesh, Assam & Meghalaya and Nagaland, Manipur, Mizoram & Tripura.
 - **West India:** Gujarat Region, Saurashtra & Kutch, Konkan & Goa, Madhya Maharashtra and Marathawada.
 - **South India:** Coastal Andhra Pradesh & Yanam, Telangana, Rayalaseema, Coastal Karnataka, North Interior Karnataka, South Interior Karnataka, Kerala & Mahe, Tamil Nadu, Puducherry & Karaikal and Lakshadweep.

LEGENDS

1. अंडमान और निकोबार द्वीपसमूह

2. अरुणाचल प्रदेश

3. असम और मेघालय

4. नागालैंड, मणिपुर, मिजोरम और त्रिपुरा

5. उप-हिमालयी पश्चिम बंगाल और सिक्किम

6. गंगीय पश्चिम बंगाल

7. ओडिशा

8. झारखंड

9. बिहार

10. पूर्वी उत्तर प्रदेश

11. पश्चिम उत्तर प्रदेश

12. उत्तराखंड

13. हरियाणा, चंडीगढ़ और दिल्ली

14. पंजाब

15. हिमाचल प्रदेश

16. जम्मू और कश्मीर और लद्दाख

17. पश्चिम राजस्थान

18. पूर्वी राजस्थान

19. पश्चिम मध्य प्रदेश

20. पूर्वी मध्य प्रदेश

21. गुजरात

22. सौराष्ट्र

23. कोंकण और गोवा

24. मध्य महाराष्ट्र

25. मराठवाड़ा

26. विदर्भ

27. छत्तीसगढ़

28. तटीय आंध्र प्रदेश और यनम

29. तेलंगाना

30. रायलसीमा

31. तमिलनाडु, पुडुचेरी और कराईकल

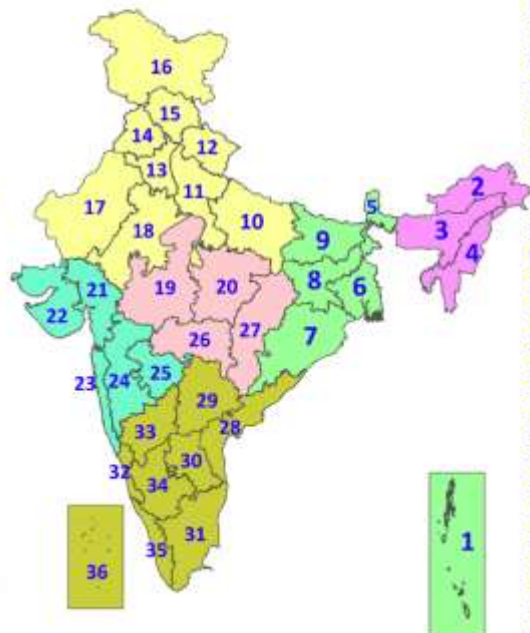
32. तटीय कर्नाटक

33. आंतरिक उत्तरी कर्नाटक

34. आंतरिक दक्षिणी कर्नाटक

35. केरल और माहे

36. लक्षद्वीप



1. Andaman & Nicobar Islands

2. Arunachal Pradesh

3. Assam & Meghalaya

4. Nagaland, Manipur, Mizoram & Tripura

5. Sub-Himalayan West Bengal & Sikkim

6. Gangetic West Bengal

7. Odisha

8. Jharkhand

9. Bihar

10. East Uttar Pradesh

11. West Uttar Pradesh

12. Uttarakhand

13. Haryana, Chandigarh & Delhi

14. Punjab

15. Himachal Pradesh

16. Jammu & Kashmir and Ladakh

17. West Rajasthan

18. East Rajasthan

19. West Madhya Pradesh

20. East Madhya Pradesh

21. Gujarat

22. Saurashtra

23. Konkan & Goa

24. Madhya Maharashtra

25. Marathwada

26. Vidarbha

27. Chhattisgarh

28. Coastal Andhra Pradesh & Yanam

29. Telangana

30. Rayalaseema

31. Tamilnadu, Puducherry & Karaikal

32. Coastal Karnataka

33. North Interior Karnataka

34. South Interior Karnataka

35. Kerala & Mahe

36. Lakshadweep

SPATIAL DISTRIBUTION (% of Stations reporting)

% Stations	Category	% Stations	Category
76-100	Widespread (WS/Most Places)	26-50	Scattered (SCT/A Few Places)
51-75	Fairly Widespread (FWS/Many Places)	1-25	Isolated (ISOL)



Fog



Heavy Snow



Cold Wave



Heavy Rain



Dust Storm



Cold Day



Very Heavy Rain



Heat Wave



Ground Frost



Extremely Heavy Rain



Warm Night



Thunder & Lightning



Hot Day



Hailstorm



Hot & Humid



Dust Raising Winds



Strong Surface Winds

COLOUR CODED WARNING

No Warning (No Action)

Watch (Be Aware)

Alert (Be Prepared To Take Action)

Warning (Take Action)

Probabilistic Forecast

Terms	Probability of Occurrence (%)
Unlikely	< 25
Likely	25 - 50
Very Likely	50 - 75
Most Likely	> 75

* Red colour warning does not mean "Red Alert", Red colour warning means "Take Action".

Forecast and Warning for any day is valid from 0830 hours IST of day till 0830 hours IST of next day.

For more details, kindly visit <https://mausam.imd.gov.in> or contact: 011-2434-4599

(Service to the Nation since 1875)

DEFINITION/CRITERIA

Rain/ Snow *

Heavy: 64.5 to 115.5 mm/cm *
Very Heavy: 115.6 to 204.4 mm/cm *
Extremely Heavy: > 204.4 mm/cm *

Heat Wave

When maximum temperature of a station reaches $\geq 40^{\circ}\text{C}$ for plains and $\geq 30^{\circ}\text{C}$ for hilly regions
(a) Based on Departure from normal

Heat Wave: Maximum Temperature Departure from normal 4.5°C to 6.4°C .

Severe Heat Wave: Maximum Temperature Departure from normal $\geq 6.5^{\circ}\text{C}$

(b). Based on Actual maximum temperature

Heat Wave: When actual maximum temperature $\geq 45^{\circ}\text{C}$.

Severe Heat Wave: When actual maximum temperature $\geq 47^{\circ}\text{C}$.

(c). Criteria for heat wave for coastal stations

When maximum temperature departure is $> 4.5^{\circ}\text{C}$ from normal. Heat Wave may be described provided maximum temperature $\geq 37^{\circ}\text{C}$.

Warm Night

When maximum temperature remains 40°C

Warm Night: When minimum temperature departure 4.5°C to 6.4°C .

Severe Warm Night: When minimum temperature departure $> 6.4^{\circ}\text{C}$.

Cold Wave

When minimum temperature of a station $\leq 10^{\circ}\text{C}$ for plains and $\leq 0^{\circ}\text{C}$ for hilly regions.

(a). Based on departure

Cold Wave: Minimum Temperature Departure from normal -4.5°C to -6.4°C .

Severe Cold Wave: Minimum Temperature Departure from normal $\leq -6.5^{\circ}\text{C}$

(b) Based on actual Minimum Temperature (for Plains only)

Cold Wave: When Minimum Temperature is $\leq 4.0^{\circ}\text{C}$

Severe Cold Wave: When Minimum Temperature is $\leq 2.0^{\circ}\text{C}$

(c) For Coastal Stations

When Minimum Temperature departure is $\leq -4.5^{\circ}\text{C}$ & actual Minimum Temperature is $\leq 15^{\circ}\text{C}$

Cold Day

When minimum temperature of a station $\leq 10^{\circ}\text{C}$ for plains and $\leq 0^{\circ}\text{C}$ for hilly regions

Based on departure

Cold Day: Maximum Temperature Departure from normal -4.5°C to -6.4°C .

Severe Cold Day: Maximum Temperature Departure from normal $\leq -6.5^{\circ}\text{C}$

Fog

Phenomenon of small droplets suspended in air and the horizontal visibility $< 1\text{km}$

Moderate Fog: When the visibility between 500-200 metres

Dense Fog: when the visibility between 50- 200 metres

Very Dense Fog: when the visibility < 50 metres

Thunderstorm

Sudden electrical discharges manifested by a flash of light (Lightning) and a sharp rumbling sound (thunder)

Dust/Sand Storm

An ensemble of particles of dust or sand energetically lifted to great heights by a strong and turbulent wind.

Frost

Ice deposits on ground

Air temperature $\leq 4^{\circ}\text{C}$ (over Plains)

Squall

A strong wind that rises suddenly, lasts for atleast 1 minute.

Moderate: Wind speed 52-61 kmph

Severe: Wind speed 62-67 kmph

Very Severe: Wind speed > 67 kmph

Sea State

Effect of various waves in the sea over specific area

Rough to very rough: Wind speed 41-62 kmph (22-33 knots) & Wave height 2.5-6 metre

High to very high: Wind speed 63-117 kmph (34-63 knots) & Wave height 6-14 metre

Phenomenal: Wind speed > 117 kmph (> 63 knots) & Wave height > 14 metre

Cyclone

Cyclonic Storm: Wind speed 62-87 kmph (34-47 knots)

Severe Cyclonic Storm: Wind speed 88-117 kmph (48-63 knots)

Very Severe Cyclonic Storm: Wind speed 118-165 kmph (64 - 89 knots)

Extremely Severe Cyclonic Storm: Wind speed 166-220 kmph (90 -119 knots)

Super Cyclone Storm: Wind speed > 220 kmph (> 119 knots)

* Red colour warning does not mean "Red Alert", Red colour warning means "Take Action".

Forecast and Warning for any day is valid from 0830 hours IST of day till 0830 hours IST of next day.

For more details, kindly visit <https://mausam.imd.gov.in> or contact: 011-2434-4599

(Service to the Nation since 1875)

Hot and Humid: When maximum temperatures remain 3°C above normal along with the above normal relative humidity.